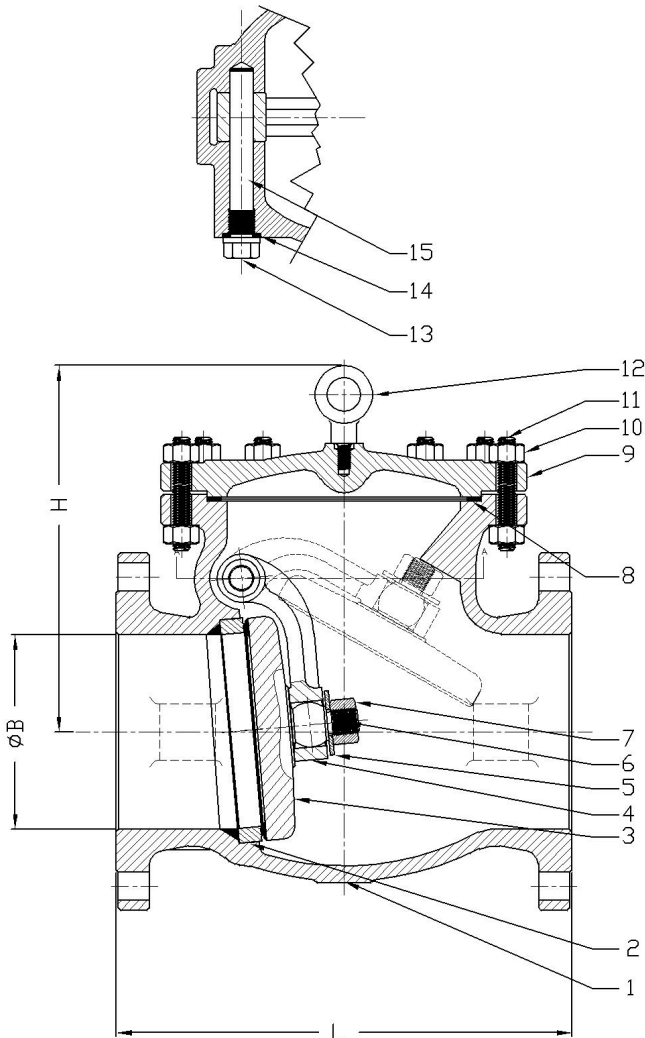


Check Valve Class 300



Standards:

Face to Face Dimensions: ANSI B16.10
 End Flange Dimensions: ANSI B16.5
 26" ≥ MSS SP-44
 Or ASME B16.47
 Basic Design: ANSI B16.34
 Wall Thickness Per: API-600
 Test Standard: API 598

MATERIAL LIST						
NO.	Part Name	ASTM Specification (Specs – Grades/Types)				
		A 216	A 352	A 217		A 351
		WCB	LCC	WC6	WC5	CF8M
1	Body	A216-WCB	A352-LCC	A217-WC6	A217-C5	A351-CF8M
2	Seat Ring	A105	A350-LF2	A182-F11	A182-F11	
	Seat Ring Surface	13CR, HF (CoCr-A), 316, 304, or Monel				
3	Disc	A105	A350-LF2	A182-F11	A182-F11	A182-316
	Disc Seating Surface	13CR, HF (CoCr-A), 316, 304, or Monel				
4	Swing Arm	A 216-WCB	A 352-LCC	A217-WC6	A 217-WC5	A 351-CF8M
5	Washer	ASTM A276 Gr. 316				
6	Pin	ASTM A276 Gr. 316				
7	Disc Nut	A194 Gr. 8				
8	Gasket	F5				
9	Bonnet	A216-WCB	A352-LCC	A217-WC6	A217-C5	A351-CF8M
10	Body Nut	A 193-B7	A 320-L7	A 193-B7	A 193-B16	A 193-B8
11	Body Stud	A 193-B7	A 320-L7	A 193-B7	A 193-B16	A 193-B8
12	Eyebolt	A181				
13	Hinge Pin Bolt	A 193-B7	A 320-L7	A 193-B7	A 193-B16	A 193-B8
14	Gasket	08F				
15	Hinge Pin	A276-410	A276-410	A276-410	A276-410	A276-316

DIMENSIONS AND WEIGHTS																		
Size	NPS	2	2-1/2	3	4	5	6	8	10	12	14	16	18	20	24	30	32	36
L	In	10.50	11.50	12.50	14.00	15.75	17.50	21.00	24.50	28.00	33.00	34.00	38.50	40.50	53.00	62.80	68.00	82.00
	Mm	267	292	318	356	400	444	533	622	711	838	863	978	1016	1346	1594	1727	2083
(RF)	In	11.13	12.13	13.13	14.63	16.38	18.13	21.63	25.13	28.63	33.62	34.61	39.13	40.80	53.80	63.80	69.10	83.10
	Mm	283	308	333	371	416	460	549	638	727	854	879	994	1035	1368	1619	1755	2111
L (RTJ)	In	10.50	11.50	12.50	14.00	15.75	17.50	21.00	24.50	28.00	33.00	34.00	38.50	40.50	53.00	62.80	68.00	82.00
	Mm	267	292	318	356	400	444	533	622	711	838	863	978	1016	1346	1594	1727	2083
L (BW)	In	2.00	2.50	3.00	4.00	5.00	6.00	8.00	10.00	12.00	13.25	15.25	17.25	19.25	23.25	29.25	31.25	35.25
	Mm	51	64	76	102	127	152	203	254	305	337	387	432	483	584	735	794	895
ØB	In	7.00	7.50	8.30	9.70	12.00	12.50	14.00	15.50	19.00	21.00	23.00	23.30	24.20	27.90	34.00	40.00	45.00
	Mm	178	191	211	246	305	318	356	394	482	533	584	590	614	694	977	1016	1143
WT	KG	21	32	43	61	84	131	213	384	449	680	840	1025	1320	1960	3400	3700	4300
	LB	46	70.5	95	134.5	185	289	469.6	846.6	990	1499	1852	2260	2910	4321	7496	8157	9480