

Gate Valve Class 150

Standards:

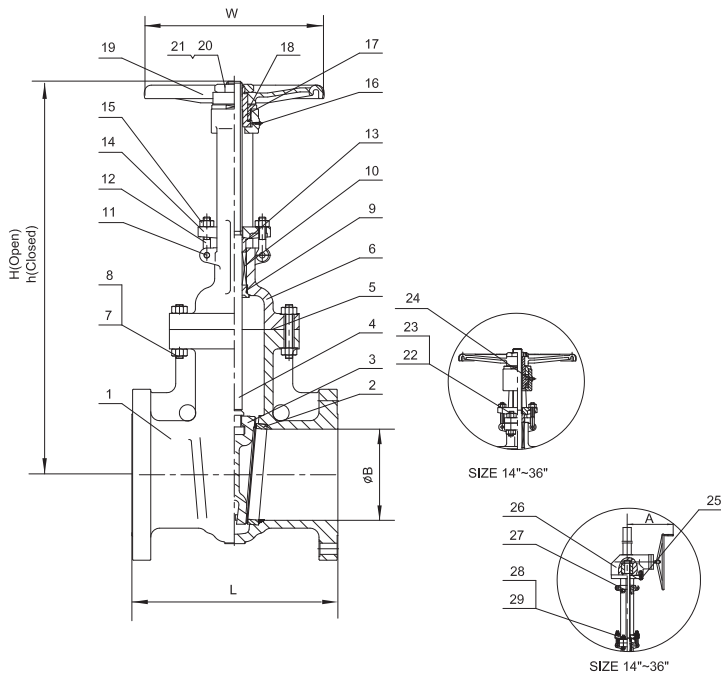
Face to Face Dimensions: ANSI B16.10

End Flange Dimensions: ANSI B16.5
26" ≥ MSS SP-44
Or API 605

Basic Design: API 600

Test Standard: API 603 (316 Valves)

API 598



| MATERIAL LIST | | | | | | |
|---------------|----------------------|---|-----------|----------|-----------|----------------|
| NO. | Part Name | ASTM Specification (Specs - Grades/Types) | | | | |
| | | A 216 | A 352 | A 217 | | |
| | | WCB | LCC | WC6 | C5 | CF8M |
| 1 | Body | A 216-WCB | A 352-LCC | A217-WC6 | A 217-C5 | A 351-CF8M |
| 2 | Seat Ring | A 105, LF2, 316, or 304 | | | | |
| | Seat Ring Surface | 13CR, HF (CoCr-A), 316, 304, or Monel | | | | |
| 3 | Gate | A 216 - WCB | A 352-LCC | A217-WC6 | A 217-C5 | A 351-CF8M |
| | Gate Seating Surface | 13CR, HF (CoCr-A), 316, 304, or Monel | | | | |
| 4 | Stem | 13CR, 316, 304, 17-4PH, or Monel | | | | |
| 5 | Gasket | Graphite Jacketed Stainless Steel | | | | |
| 6 | Bonnet | A 216 - WCB | A 352-LCC | A217-WC6 | A 217-C5 | A 351-CF8M |
| 7 | Bonnet Bolt Nut | A 194-2H | A 194-4 | A 194-2H | A 194-4 | A 194-8 |
| 8 | Bonnet Bolt | A 193-B7 | A 320-L7 | A 193-B7 | A 193-B16 | A 193-B8 |
| 9 | Bonnet Bushing | 13CR, 316, or 304 | | | | |
| 10 | Packing | Braided Graphite & Die Formed Graphite Ring | | | | |
| 11 | Eye Bolt Pins | Carbon Steel | | | | A 276 Type 316 |
| 12 | Gland Eye Bolts | A 193-B7 | A 320-L7 | A 193-B7 | | A 193-B8 |
| 13 | Gland | 13CR, 316, or 304 | | | | |
| 14 | Gland Flange | A 216 - WCB | A 352-LCC | A217-WC6 | A 217-C5 | A 351-CF8M |
| 15 | Eye Bolt Nut | A 194-2H | A 194-7M | A 194-2H | | A 194-8 |
| 16 | Grease Nipple | Carbon Steel | | | | A 276 Type 316 |
| 17 | Yoke Sleeve | A 439 Gr. D2C | | | | |
| 18 | Retaining Nut | Carbon Steel | | | | A 276 Type 316 |
| 19 | Handwheel | Malleable Iron | | | | |
| 20 | Handwheel Nut | Carbon Steel | | | | A 276 Type 316 |
| 21 | Screw | Carbon Steel | | | | |
| 22 | Yoke Pad Bolts | A 193-B7 | | | | A 276 Type 316 |
| 23 | Yoke Pad Bolt Nuts | A 194-2H | | | | A 276 Type 316 |
| 24 | Bearing | Carbon Steel | | | | |
| 25 | Stud | Carbon Steel | | | | |
| 26 | Gear | Carbon Steel | | | | |
| 27 | Yoke | A 216 - WCB | A 352-LCC | A217-WC6 | A 217-C5 | A 351-CF8M |
| 28 | Yoke Pad Bolt | A 193-B7 | A 320-L7 | A 193-B7 | A 193-B16 | A 193-B8 |
| 29 | Yoke Pad Bolt Nuts | A 194-2H | A 194-4 | A 194-2H | A 194-4 | A 194-8 |

| DIMENSIONS AND WEIGHTS | | | | | | | | | | | | | | | | | | | | |
|------------------------|-----|-------|-------|-------|-------|-------|-------|-------|-------|-------|-------|-------|-------|-------|--------|--------|--------|--------|--------|--------|
| Size | NPS | 2 | 2-1/2 | 3 | 4 | 5 | 6 | 8 | 10 | 12 | 14 | 16 | 18 | 20 | 24 | 26 | 28 | 30 | 32 | 36 |
| L (RF) | In | 7.00 | 7.50 | 8.00 | 9.00 | 10.00 | 10.50 | 11.50 | 13.00 | 14.00 | 15.00 | 16.00 | 17.00 | 18.00 | 20.00 | 22.00 | 24.00 | 24.00 | 26.00 | 28.00 |
| | Mm | 178 | 190 | 203 | 229 | 254 | 267 | 292 | 330 | 356 | 381 | 406 | 432 | 457 | 508 | 559 | 610 | 610 | 660 | 711 |
| L (RTJ) | In | 7.50 | 8.00 | 8.50 | 9.50 | 10.50 | 11.00 | 12.00 | 13.50 | 14.50 | 15.50 | 16.50 | 17.50 | 18.50 | 20.50 | 22.50 | 24.50 | 24.50 | 26.50 | 28.50 |
| | Mm | 191 | 203 | 216 | 241 | 267 | 279 | 305 | 343 | 368 | 394 | 419 | 445 | 470 | 521 | 572 | 622 | 622 | 673 | 724 |
| L (BW) | In | 8.50 | 9.50 | 11.12 | 12.00 | 15.00 | 15.88 | 16.50 | 18.00 | 19.75 | 22.50 | 24.00 | 26.00 | 28.00 | 32.00 | 34.00 | 36.00 | 36.00 | 38.00 | 40.00 |
| | Mm | 216 | 241 | 283 | 305 | 381 | 403 | 419 | 457 | 502 | 572 | 610 | 660 | 711 | 813 | 864 | 914 | 914 | 965 | 1016 |
| A | In | | | | | | | | | | 14.17 | 14.17 | 14.17 | 16.18 | 16.18 | 23.62 | 23.62 | 23.62 | 23.62 | 23.62 |
| | Mm | | | | | | | | | | 360 | 360 | 360 | 411 | 411 | 600 | 600 | 600 | 600 | 600 |
| B | In | 2 | 3 | 3 | 4 | 5 | 6 | 8 | 10 | 12 | 13 | 15 | 17 | 19 | 23 | 25 | 27 | 29 | 31 | 34.5 |
| | Mm | 51 | 64 | 76 | 102 | 127 | 152 | 203 | 254 | 305 | 337 | 387 | 432 | 489 | 591 | 643 | 692 | 743 | 781 | 876 |
| h | In | 13 | 14 | 16 | 18 | 21 | 24 | 29 | 35 | 41 | 46 | 54 | 60 | 67 | 79 | 94 | 102 | 111 | 113 | 118 |
| | Mm | 328 | 361 | 412 | 469 | 534 | 599 | 746 | 882 | 1052 | 1173 | 1362 | 1530 | 1698 | 2018 | 2387 | 2590 | 2819 | 2870 | 2997 |
| H | In | 15.28 | 17.48 | 19.57 | 23.03 | 26.65 | 30.12 | 37.95 | 45.47 | 53.62 | 60.43 | 71.30 | 79.09 | 87.80 | 103.98 | 121.50 | 130.98 | 141.97 | 145.98 | 154.49 |
| | Mm | 388 | 444 | 497 | 585 | 677 | 765 | 964 | 1155 | 1362 | 1535 | 1811 | 2009 | 2230 | 2641 | 3086 | 3327 | 3606 | 3708 | 3924 |
| W | In | 8 | 10 | 10 | 10 | 12 | 12 | 14 | 16 | 18 | 20 | 22 | 25 | 25 | 28 | 34 | 34 | 34 | 35 | 35 |
| | Mm | 200 | 250 | 250 | 250 | 300 | 300 | 350 | 400 | 450 | 500 | 560 | 640 | 640 | 720 | 860 | 860 | 860 | 900 | 900 |
| WT | KG | 18 | 28 | 34 | 52 | 71 | 88 | 144 | 197 | 298 | 430 | 548 | 744 | 1117 | 1466 | 1699 | 2010 | 2380 | 3100 | 3950 |
| | LB | 40 | 62 | 75 | 115 | 157 | 194 | 317 | 434 | 657 | 948 | 1208 | 1640 | 2463 | 3232 | 3746 | 4431 | 5247 | 6834 | 8708 |

(713) 673-2073 - Fax (713) 673-4641 - Toll Free (866) GO-BERIC (462-3742)

www.bericvalves.com

Rev. 010111

Copyright 2011

Page 1GT